

Long-Term Recovery of Cultural Resources

USA Seven Years Later
Japan One Year Later

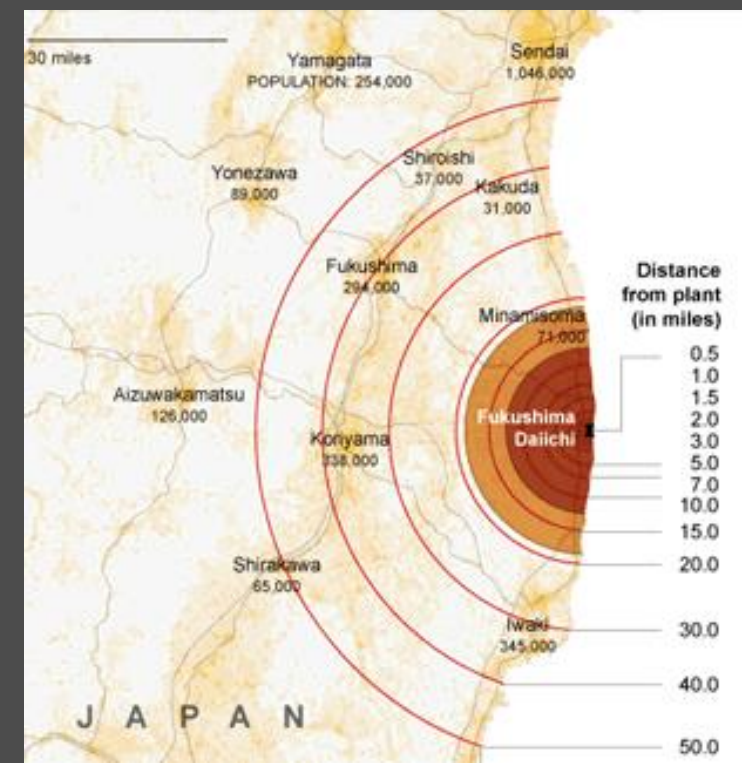
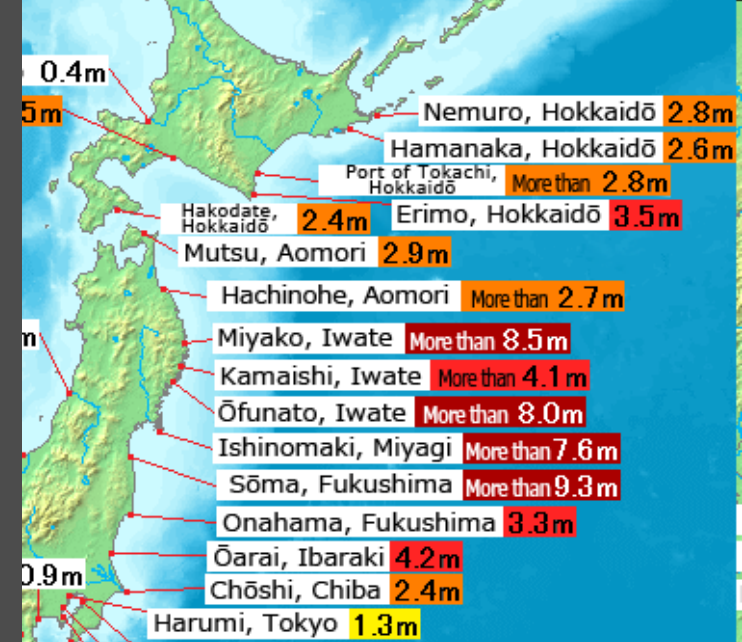
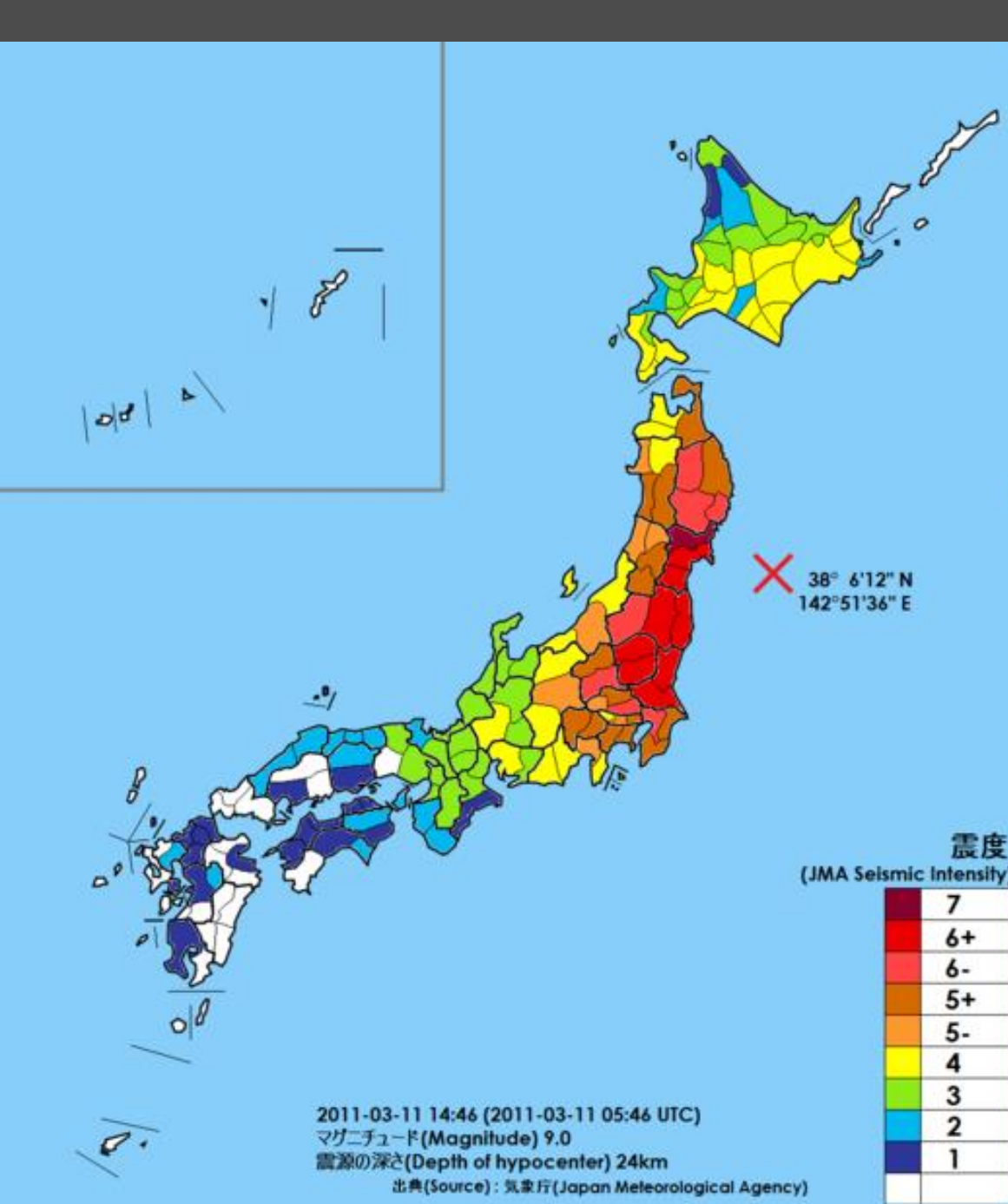
Andrew Robb

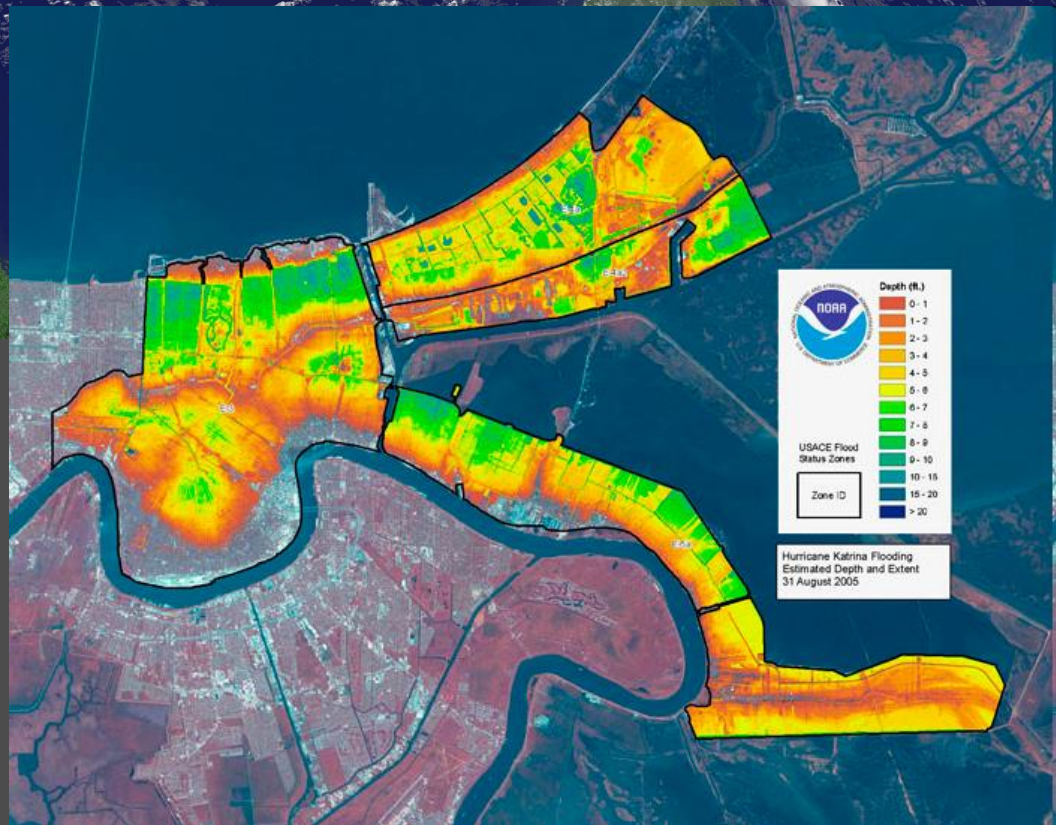
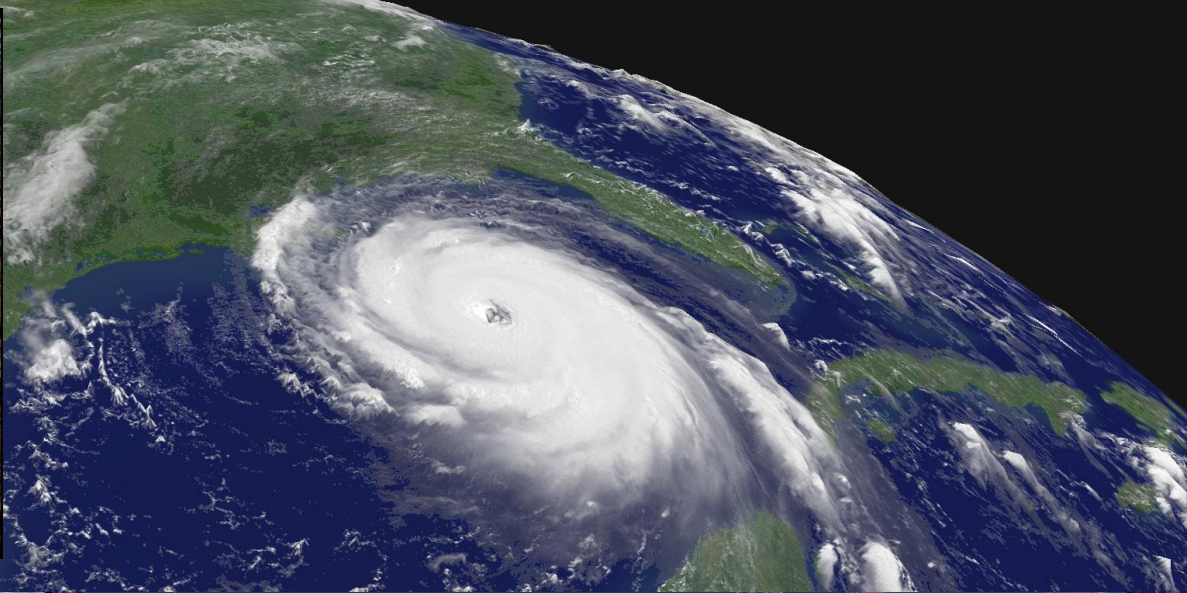
Section Head, Special Formats
Coordinator, Preservation Emergency Response Team
Conservation Division
Library of Congress

- Disasters
- Recovery
- Cultural Resources
- Needs and Next Steps

Catastrophic Disasters

- Katrina and Rita 2005 USA
 - Two Hurricanes
 - Failure of Levees
- 3/11/11 Japan
 - Great East Japan Earthquake
 - Tsunami
 - Fukushima Daiichi Nuclear Reactor Meltdown and Radiation Emissions





Recovery Timelines

Life Safety

Building Safety

Collection Safety

**Short-term
Recovery**

stabilize

Days & Weeks →

Services

Buildings

Collections

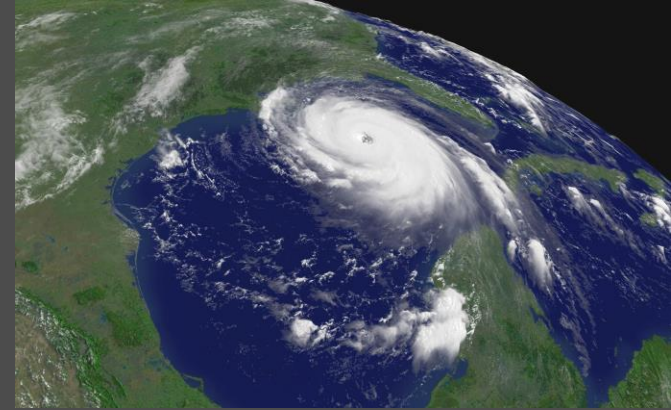
**Long-term
Recovery**

rehabilitate

Months & Years →

*The larger the incident, the longer the recovery.
The longer the recovery, the more uneven the recovery*

Tulane U. Library Recovery



2005



Completion 2013?



Ofunato



4/13/11



One year later
320,000 items
treated

Cultural Resources



National Treasures



Historic Materials



Personal Property

Library Damage

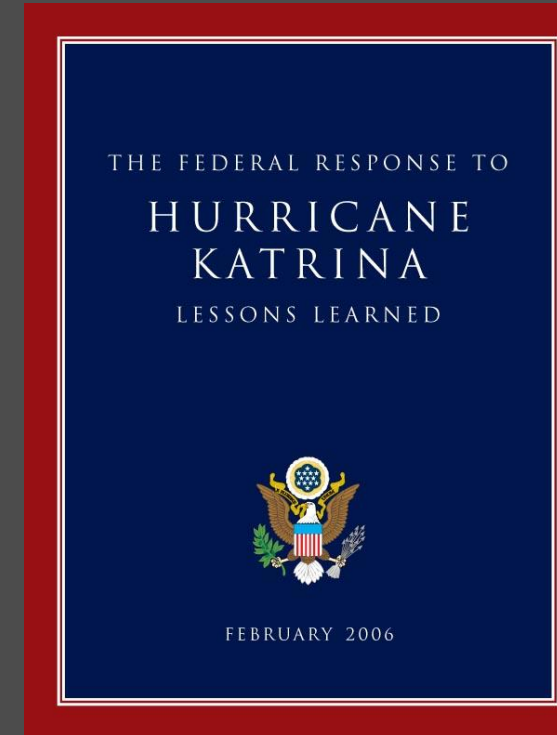


National Treasures



Katrina Lessons Learned

- Dept. of Homeland Security Reorganized
 - FEMA elevated in hierarchy
- A Multi-State Coordinator with up to four deputies can be appointed by the President
- Cultural Institutions are now eligible for Public Assistance Funding
- Development of the National Disaster Recovery Framework (NDRF)



Katrina & Rita

Lessons Learned

Disasters do happen

The bigger the incident the less control
anyone has over it

Be as prepared as you can be

Do what you can,
when you can,
with what you have

Recovery Resources



Capacity in Japan is limited, compared to the US.

Why?



Emergency Awareness



Can this degree of preparation be applied to cultural resources?

Why hasn't it been?



What can we do?

- Continue our positive support
- Keep asking how people and collections are doing
- Recovery of collections will continue for many, many years.
- For some long-term recovery may be just beginning
- International collaboration will help us both do better
 - Japan build capacity
 - US better organization, especially for small disasters

Kizuna



Acknowledgements

CEAL CJM

Setsuko Noguchi

Japan

Makoto Nagao

Mika Lawler

Michiko Kawanabe

Akiko Okahashi

Satoko Kinno

Isamu Sakamoto

Conservation Colleagues

Paul Messier

Lynn Davis

Sarah Stauderman

Lori Foley

Mark Greek

Greg Hill

Barbara Lemmen

Lois Price

Mogens Koch

Martin Jurgens

Alisha Chipman

Debbie Norris

Peter Waters

LC

James Billington

Deanna Marcum

Dianne van der Reyden

Asian Division

Franklin Oto

Mari Nakahara

Conservation Division

Diane Vogt-O'Connor

PERT Team

Yasmeen Khan

Alan Haley

Holly Krueger

Megan Keister

Ashley Greek

Angela Burgess

Office of Strategic Initiatives

Bill Lefurgy

Leslie Johnston

Email or Call

Andrew Robb

anro@loc.gov

anosro@gmail.com

+1 202 707-1175

